



INTERCONTINENTAL.  
LONDON PARK LANE



WEDDINGS AT NO. 1 PARK LANE



## SAY ‘I DO’ AT NO. 1 PARK LANE

Begin your forever at one of London’s most prestigious addresses, where timeless elegance meets heartfelt celebration. Perfectly positioned in the heart of Mayfair—moments from the glamour of Knightsbridge and set between the Royal Parks and the historic charm of Hyde Park Corner—our prestigious address provides an extraordinary backdrop for your most special day.

From iconic wedding photographs beneath the Wellington Arch to your arrival through a private entrance on Hamilton Place, every detail has been thoughtfully considered to create a sense of occasion.

Whether you’re envisioning an intimate gathering or a grand celebration for up to 600 guests, our flexible 811-square-metre event space can be transformed to reflect your vision, complete with a spacious dance floor for your first dance and beyond.

Our experienced on-site wedding manager will guide you through every step, from bespoke menu creation tailored to your tastes to the final flourish of your celebration. And when the last glass is raised, your wedding night continues in a beautifully appointed complimentary room—an elegant close to a day designed to perfection.

SETTINGS FOR EVERY LOVE STORY

## ELEGANCE AT EVERY TURN

Start your forever in a truly iconic setting, rich in royal heritage. Exchange vows on the site of the childhood home of Her Majesty The Queen Elizabeth II, an unrivalled destination for your special day.

The flagship InterContinental Hotels & Resorts property combines authentically personalised service with a team that brings insider London to life.

Allow our experienced wedding team to help you curate the most memorable day of your life with attention in every little detail.

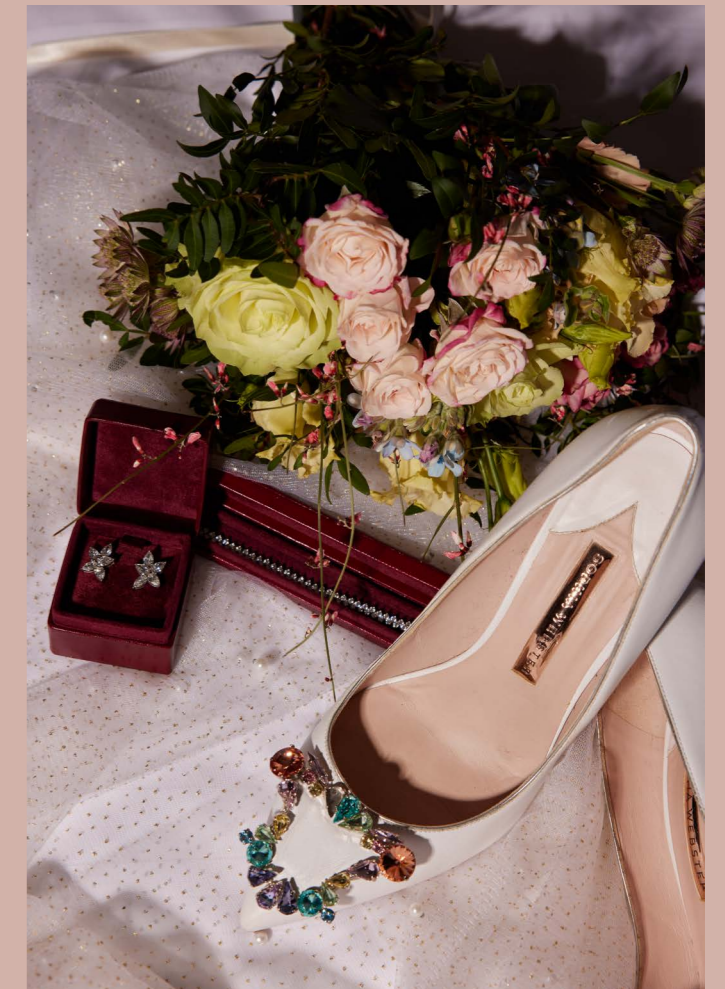


## ACCOMMODATION

With classic elegance and modern simplicity, our rooms feature world class touches to ensure total comfort, complete with the latest in technology.

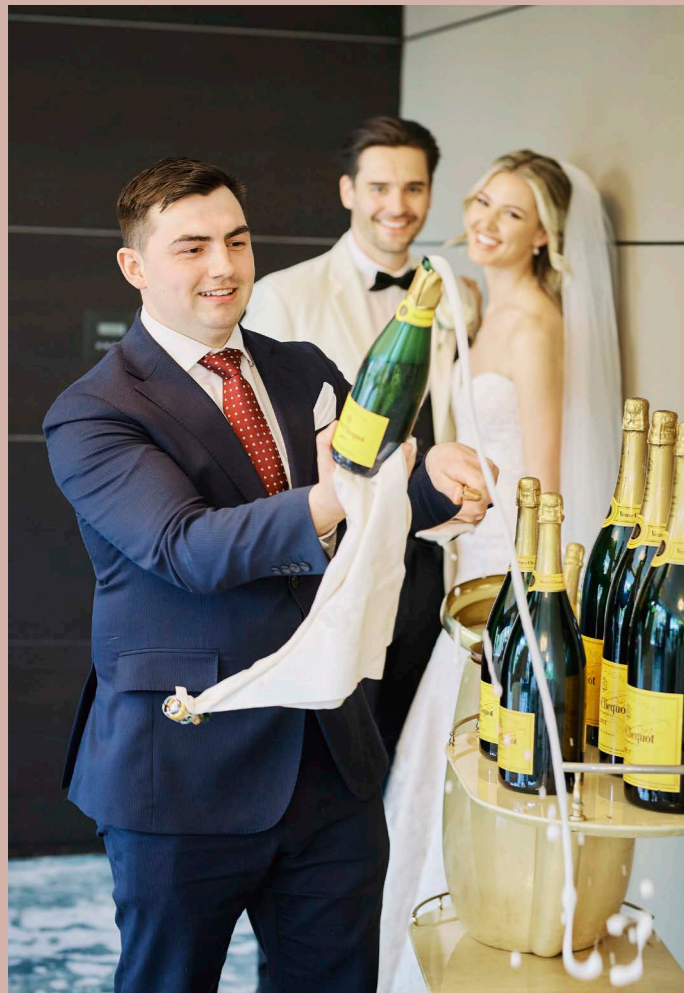
All rooms showcase quintessential London views from the inner court to the Royal Parks and London landmarks. With 449 rooms, including 71 expansive suites there is a room to type all of your guests needs and occasion. When booking 10 or more rooms for your wedding there are discounted rates available. Contact your Weddings Manager to learn more.

Toast to the day ahead and get ready with loved ones, while our dedicated team takes care of every detail to ensure you look and feel your best.













## INCREDIBLE OCCASSIONS

At InterContinental London Park Lane our events team and trusted partners will work closely with you to curate your bespoke event with innovation and creativity, bringing your Incredible Occasion to life. Whether it's an intimate moment in The Arch Bar, booking one of our Signature Suites, Veuve Cliquot sabrage ceremony, Royal Warrant Moyses Stevens florists or a masterclass with Theo Randall the team are here to assist. For a full list of our preferred suppliers and partners please contact your Wedding Manager.





## OUR CAPACITY CHART

| Event room         |  Theatre |  Banquet |  Cabaret |  U-Shape |  Boardroom |  Classroom |  Reception |  Hollow Square |  Height (m) |  Size (sq m) |
|--------------------|---|---|---|---|---|---|---|---|--|---|
| Ballroom           | 700   | 750   | 259   | 63/108  | -   | -   | 1000  | 84  | 13.5   | 811   |
| Ballroom 1 & 2     | 500   | 616   | 231   | 63/108  | -   | 252   | 800   | 84  | 13.5   | 665   |
| Ballroom 1         | 300   | 336   | 126   | 45/72   | -   | 135   | 400   | 72  | 13.5   | 430   |
| Ballroom 2         | 100   | 188   | 42  | 24  | 40  | 75  | 250   | 30  | 13.5   | 235   |
| Ballroom 3         | 150   | 120   | 42  | -   | 40  | 54  | 200   | -   | 9.5  | 146   |
| Roman              | 20  | 24  | 7   | -   | 12  | 12  | 40  | -   | 8.5  | 36  |
| Portobello         | 32  | 36  | 14  | -   | 12  | 15  | 60  | -   | 8.5  | 42  |
| Petticoat          | 38  | 36  | 14  | 15  | 16  | 18  | 80  | 18  | 8.5  | 51  |
| Marylebone         | 50  | 48  | 21  | 18  | 16  | 24  | 90  | 20  | 8.5  | 58  |
| Leadenhall         | 52  | 60  | 21  | 20  | 18  | 30  | 110   | 26  | 8.5  | 64  |
| Grays              | 80  | 72  | 42  | 35  | 34  | 50  | 130   | 46  | 8.8  | 101   |
| Roman to Grays     | -   | 265   | -   | -   | -   | -   | 550   | -   | 8.53   | 352   |
| Covent Garden      | -   | -   | -   | -   | 12  | -   | -   | -   | 8.8  | 31  |
| Columbia           | 15  | 12  | 7   | -   | 10  | -   | 12  | -   | 8.8  | 24  |
| Chelsea            | 15  | 12  | 7   | -   | 10  | -   | 12  | -   | 8.8  | 24  |
| Columbia & Chelsea | 40  | 30  | 21  | -   | 16  | 24  | 35  | -   | 8.8  | 48  |
| Camden             | 15  | 12  | 7   | -   | 10  | -   | 12  | -   | 8.8  | 24  |
| Borough            | 15  | 12  | 7   | -   | 10  | -   | 12  | -   | 8.8  | 24  |
| Camden & Borough   | 40  | 30  | 21  | -   | 16  | 24  | 35  | -   | 8.8  | 48  |

[Click here to see our 3D walk through.](#)



## CEREMONY

At InterContinental London Park Lane, we are fully licensed to host Civil Ceremonies and offer a range of elegant spaces to suit both intimate gatherings and larger celebrations. We always ensure there is only one wedding on the Mezzanine floor per day to ensure you don't run into any other wedding parties.

Our Park Lane Suites, with stunning views of Wellington Arch and the Royal Parks, provide an ideal setting for saying "I do." These suites can accommodate up to 200 guests and can also be divided for smaller, more personal ceremonies.

For grander occasions, our sophisticated Ballroom is the perfect choice, offering a capacity of up to 600 guests.

Please note that you will need to arrange a registrar through the City of Westminster Council. Be sure to mention that your ceremony will take place at InterContinental London Park Lane. A separate fee will apply for this service, payable directly to the council.

### Contact Details

0207 641 7500

[registeroffice@westminster.gov.uk](mailto:registeroffice@westminster.gov.uk)



## THE RECEPTION OF YOUR DREAMS



## THE BALLROOM

A private entrance leads you and up to 600 guests to a flexible venue in which you can host your ceremony, reception, or both.

The ballroom provides the perfect blank canvas for you to create the bespoke design of your dreams. Styled to suit your every whim, we will ensure every finely crafted detail contributes to an atmosphere of true romance.



## PARK LANE SUITES

The perfect micro wedding is wonderfully intimate and all about you.

At InterContinental London Park Lane we have a collection of luxuriously appointed spaces to meet every dream and vision to create a uniquely personalised wedding.

With our enviable location in Mayfair overlooking Hyde Park, each of our private spaces offers different possibilities so we can tailor your day exactly to your needs.

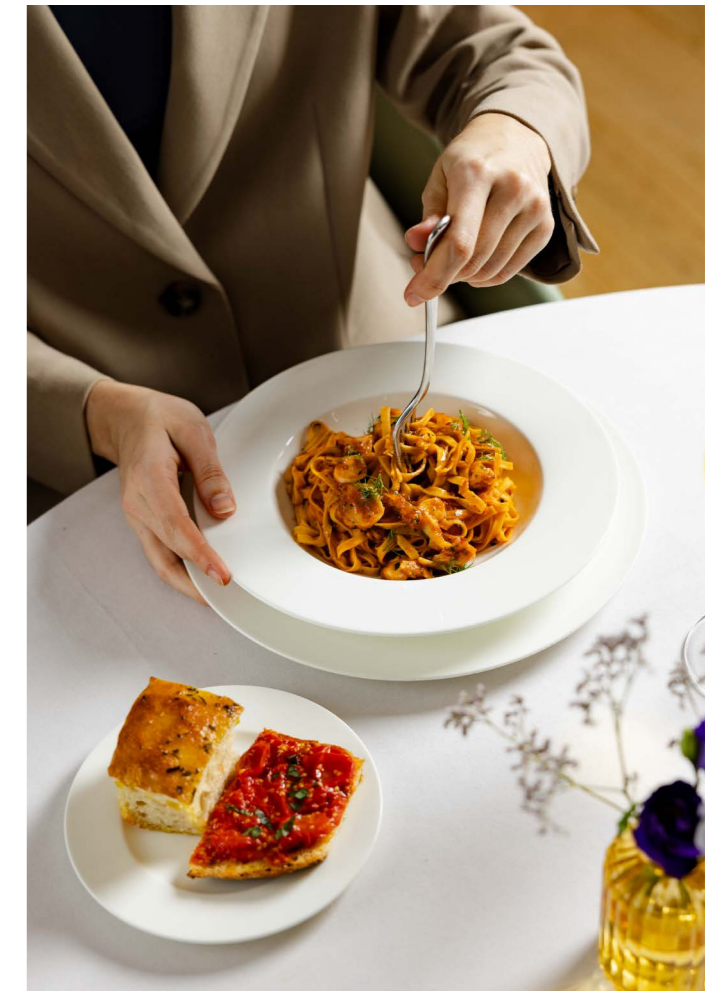
Park Lane Suites are designed for less than 100 people and can be broken down into smaller spaces are needed for a drinks reception or sit-down reception.



## PRIVATE DINING AT THEO RANDALL

Celebrated Italian restaurant, Theo Randall Cucina Italiana, offers a variety of options for exclusive events or intimate dinners. The contemporary private dining room offers capacity for up to 24 guests, with a semi-private option for up to 50 guests and the entire restaurant available to hire for up to 145 guests.

Chef Theo Randall carefully tailors this Italian dining experience to create a truly memorable occasion. His rustic menu from impeccably sourced produce will invite your guests to travel through Italy with a tantalising array of the most delicious regional offerings.



## DESIGN YOUR OWN MENU

Celebrate your love with a dining experience that reflects your personal tastes. Our award-winning culinary team will craft a bespoke menu inspired by your vision, whether you dream of a traditional wedding breakfast or a modern, creative feast.

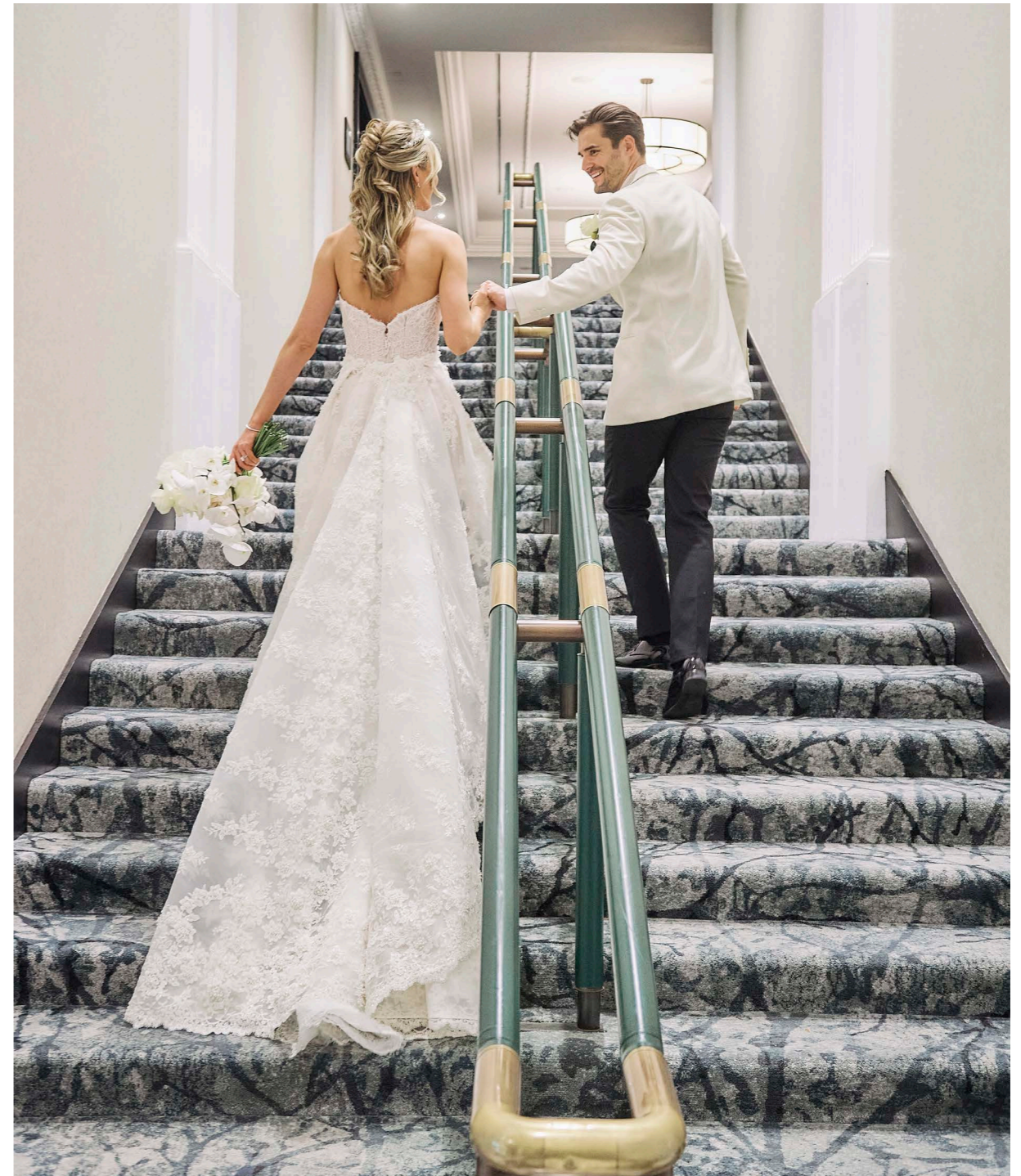
From a traditional wedding menu to a contemporary customised feast, our fine dining experience of seasonal starters, indulgent mains and exquisite desserts will suitably satisfy your guests. Dishes are meticulously crafted from the freshest of ingredients, locally sourced where possible.

Drawing inspiration from your favourite global cuisine, our culinary team will help you create a bespoke menu, inspired by the flavours you enjoy the most.

An extensive repertoire of international and local beverages along with crafted signature cocktails can be chosen to suit the style of your occasion.

InterContinental London Park Lane is proud to create menus to for a full range of preferences and dietary needs.

External catering is also permitted on occasion - please discuss the terms and conditions of this with your dedicated Wedding Planner.



One Park Lane, London  
W1J 7QY, United Kingdom  
E: [events.london@ihg.com](mailto:events.london@ihg.com)  
T: +44 (0)20 7409 3131  
[parklane.intercontinental.com](http://parklane.intercontinental.com)